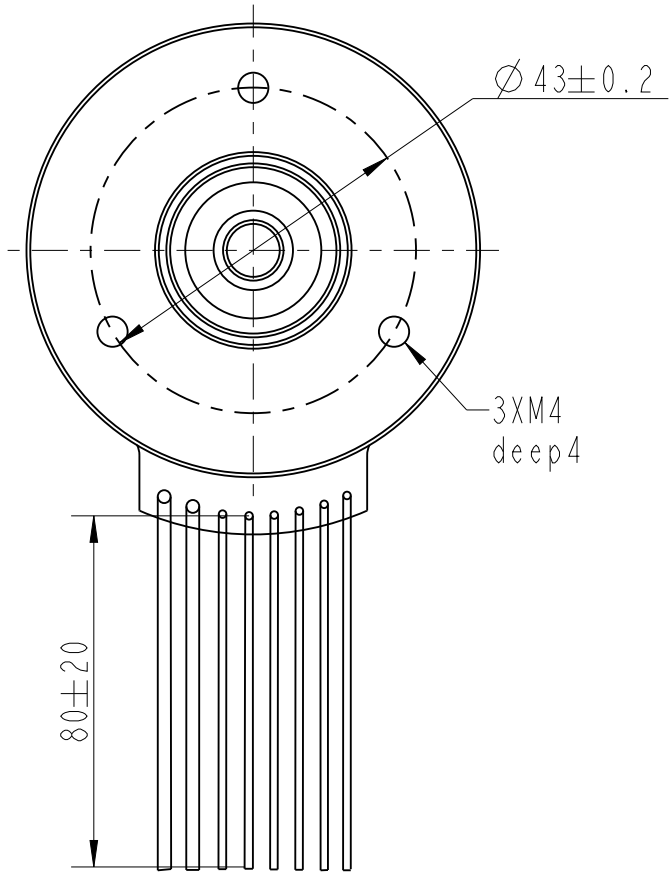
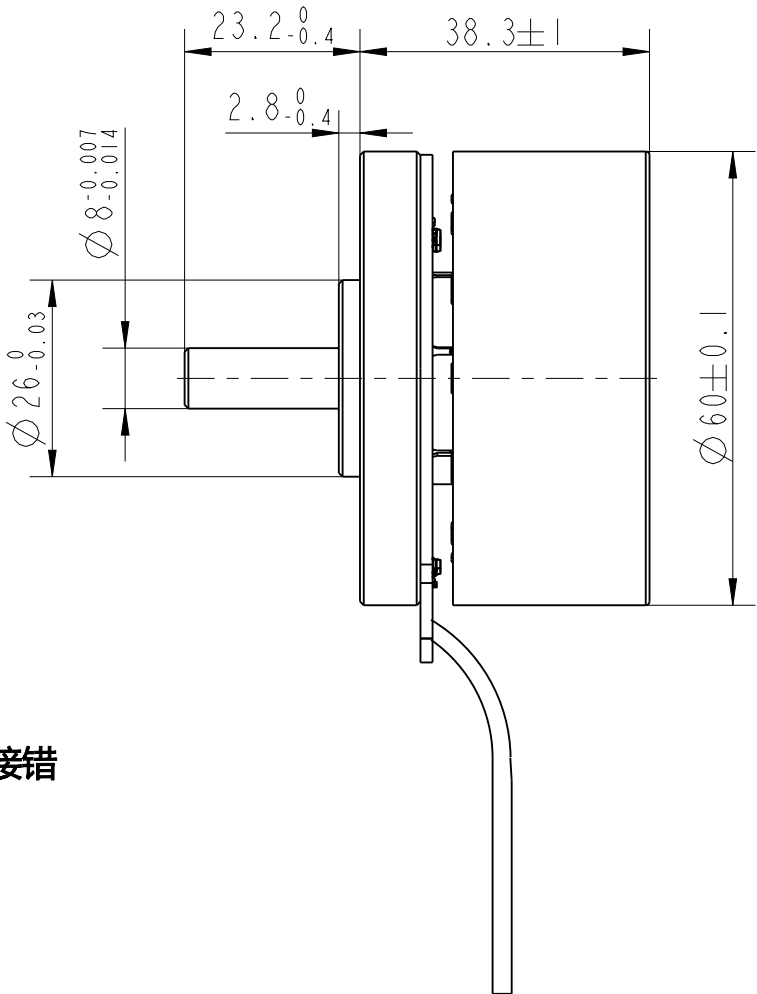
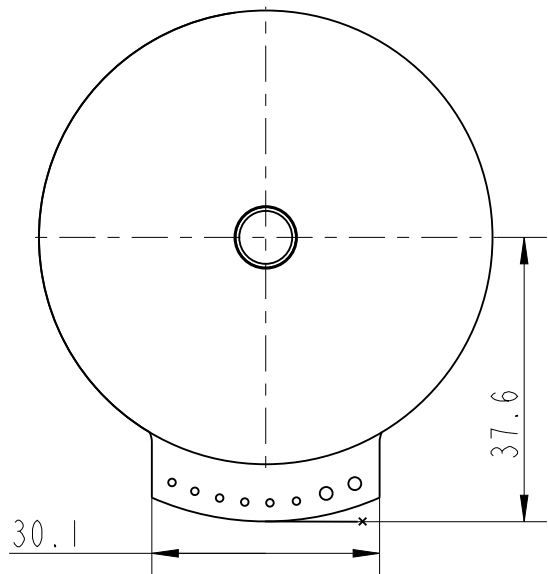
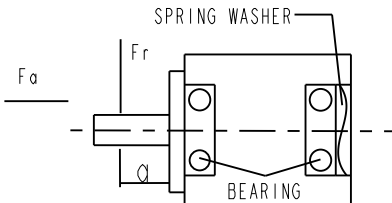


REV	ECN	NO	DESCRIPTION	DRN	APP'D	DATE



电压 DC 9V~30V, 适用12V\24V系统  
功率 根据电机据功率等级  
温度 -20℃~+50℃  
湿度 10%~85%,无结露  
位置传感器 霍尔位置传感器  
保护功能 欠压、过压、过流、过热、堵转、传感器错误  
电气接口  
VDD 红, 电源正极  
GND 黑, 电源负极  
PG 黄, 转速信号: TTL-5V电平, 1脉冲/1对极/转  
SV蓝, 调速信号: 兼容3.3V~24V, PWM\1~20KHZ, 负占空比有效 0~5%全速  
5~95%线性调速 95~100%停止  
F/R 绿, 方向信号: 兼容3.3V~24V 低电平CCW ( <0.8V ) 高电平或悬空CW  
BK 白, 刹车信号: 兼容3.3V~24V 低电平有效 ( <0.8V ) 高电平或悬空无效  
+5V灰, 传感器电源输出正极 ( <=10mA )  
GND 棕, 传感器电源输出地

\*\*注意:棕色线和黑色线不能接错

NUMBER OF PHASE	绕组相数	3										
NUMBER OF POLES	极数	14	Wires for DriverUL1430AWG18/AWG24									
LINE TO LINE RESISTANCE	线电阻	0.25±10% ohms@20°C										
LINE TO LINE INDUCTANCE	线电感	0.2±20% mH@1kHz	VDD	GND	PG	SV	F/R	BRAKE	+5V	GND		
NOMINAL VOLTAGE	额定电压	24 VDC	RED	BLK	YEL	BLUE	GRE	WHT	ASH	BRN		
NO LOAD SPEED	空载转速	4400±10% RPM	<div>PERMISSIBLE RADIAL+AXIAL FORCE</div> 									
NO LOAD CURRENT	空载电流	0.65 A REF										
RATED TORQUE	额定转矩	290 mN.m										
RATED SPEED	额定转速	3700±10% RPM										
RATED CURRENT	额定电流	5.6 A										
PEAK TORQUE	峰值转矩	870 mN.m										
PEAK CURRENT	峰值电流	17.0 A										
BACK EMF CONSTANT	反电势常数	4.0±10% Vrms/kRPM										
TORQUE CONSTANT	转矩常数	52 mN.m/A										
INSULATION CLASS	绝缘等级	B 130°C	AXIAL-FORCE			轴向压力		Fa=10 N Max				
DIELECTRIC STRENG	介电强度	600VAC ISEC	DISTANCE			距离		a=10 mm				
INSULATION RESIST	绝缘电阻	100MOhm @500VDC	RADIAL-FORCE			径向压力		Fr=28 N Max				
ROTOR INERTIA	转子转动惯量	1000g.cm <sup>2</sup>	SHAFT RADIAL PLAY			径向间隙		0.02mm Max.@4N				
WEIGHT	重量	0.5Kg REF	SHAFT AXIAL PLAY			轴向间隙		0.14mm Max.@4N				
OPERATION AMBIENT	使用环境	Ambient temperature:-25...+55°C,humidity Max.85%(No condensation)										
STORAGE AMBIENT	存储环境	Ambient temperature:-25...+85°C,humidity Max.85%(No condensation)										

A			DESIGN	DATE	P/N.	0
REV	ECN NO.	DESCRIPTION			TITLE	Specifications
UNLESS OTHERWISE SPECIFIED TOLERANCES: DECIMALS: .X ±0.5 .XX ±0.25 .XXX ±0.1 UNIT: mm DO NOT SCALE DRAWING		MATERIAL	WEIGHT	CHECK	USED ON	FL60BLW38-24V-37110A-1E3-1
					DWG NO.	REV A
		SHEET	STANDARDIZATION			
		I OF I				
		FIRST ANGLE PROJECTION	SCALE	APPD	FULLING MOTOR	
			1:1			