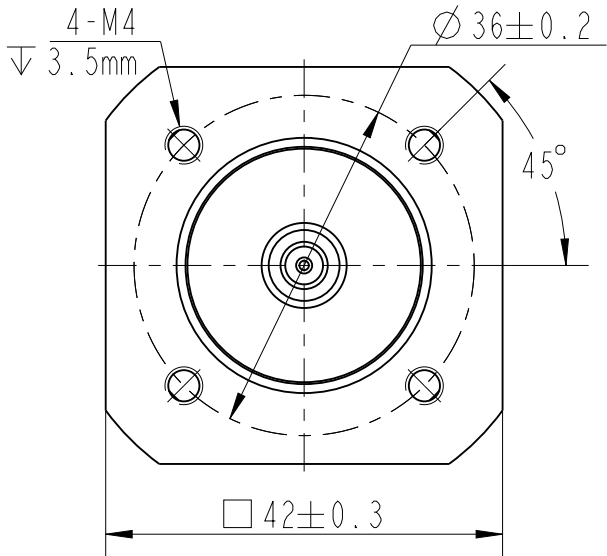
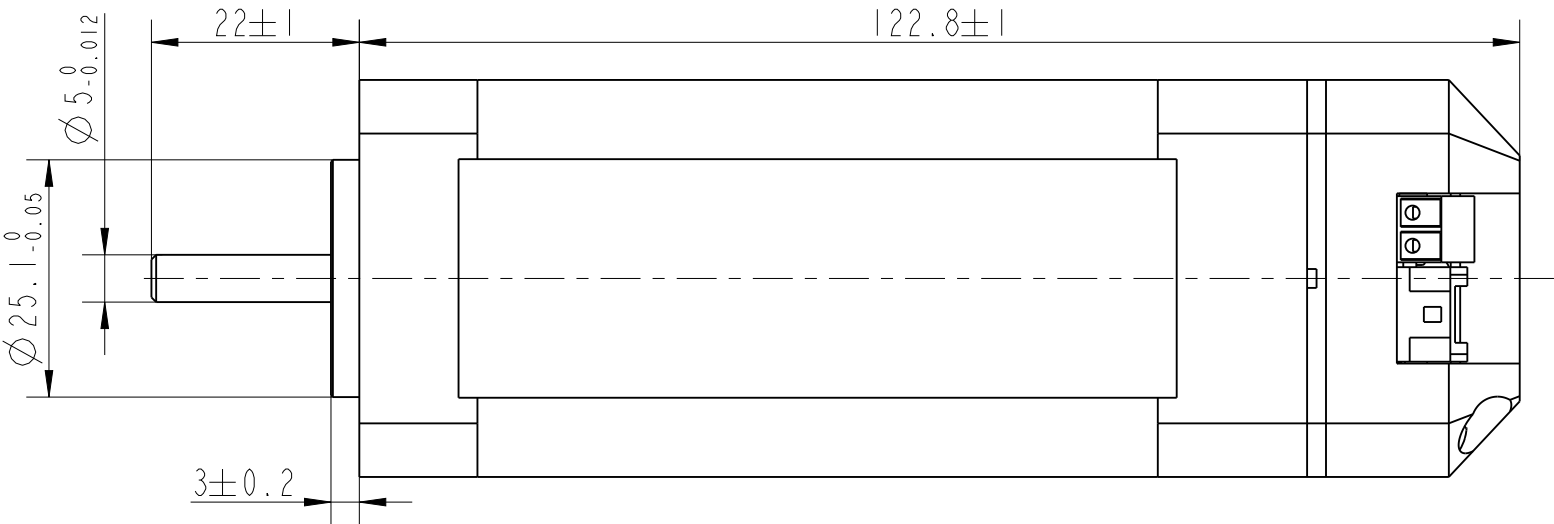
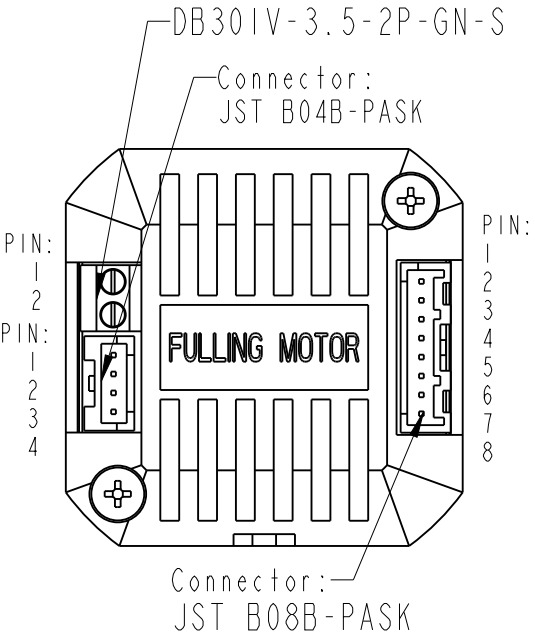


REV	ECN	NO	DESCRIPTION	DRN	APP'D	DATE



DB301V-3.5-2P-GN-S	
PIN	Description
1	VIN
2	GND

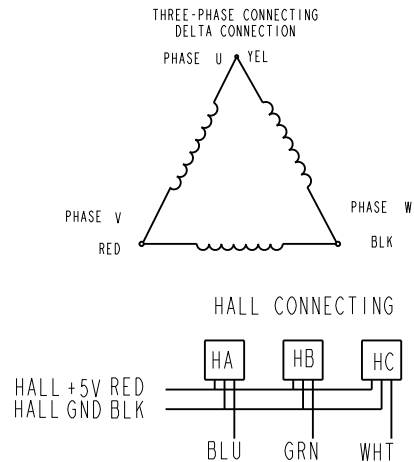
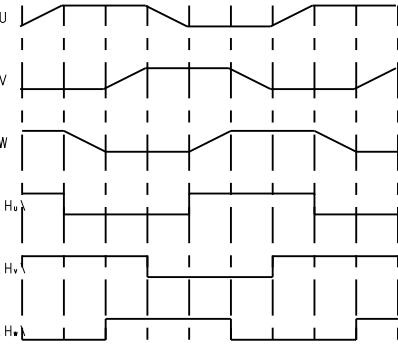
JST B04B-PASK	
PIN	Description
1	485_A
2	485_B
3	485_A
4	485_B

JST B08B-PASK	
PIN	Description
1	X0
2	X1
3	X2
4	X3
5	XCOM
6	Y0
7	Y1
8	YCOM

NUMBER OF PHASE	绕组相数	3
NUMBER OF POLES	极数	8
LINE TO LINE RESISTANCE	线电阻	0.28±10% ohms@20°C
LINE TO LINE INDUCTANCE	线电感	0.45±20% mH@1kHz
NOMINAL VOLTAGE	额定电压	24 VDC
NO LOAD SPEED	空载转速	6500±10% RPM
NO LOAD CURRENT	空载电流	0.6 A
RATED TORQUE	额定转矩	0.25 N.m
RATED SPEED	额定转速	4000 RPM
RATED CURRENT	额定电流	7 A
PEAK TORQUE	峰值转矩	0.75 N.m
PEAK CURRENT	峰值电流	21 A
BACK EMF CONSTANT	反电势常数	2.62±10% Vrms/kRPM
TORQUE CONSTANT	转矩常数	0.0355 N.m/A
INSULATION CLASS	绝缘等级	B 130°C
DIELECTRIC STRENG	介电强度	650VAC ISEC
INSULATION RESIST	绝缘电阻	100MOhm @500VDC
ROTOR INERTIA	转子转动惯量	96 g.cm <sup>2</sup>
WEIGHT	重量	1.0 Kg
OPERATION AMBIENT	使用环境	Ambient temperature:-20...+50°C,humidity Max.85%(No condensation)
STORAGE AMBIENT	存储环境	Ambient temperature:-20...+85°C,humidity Max.85%(No condensation)

装驱动器前自家测试接线			
Wires for Phases UL1430 AWG20			
PHASE U	PHASE V	PHASE W	
YEL	RED	BLK	
Wires for Hall UL3265 AWG28			
HALL Vcc	Hu	Hv	Hw
RED	BLU	GRN	WHT
		BLK	
PERMISSIBLE RADIAL+AXIAL FORCE			
<p>SPRING WASHER</p> <p>BEARING</p> <p>Fr</p> <p>Fa</p>			
AXIAL-FORCE	轴向压力	Fa=10 N Max	
DISTANCE	距离	a=10 mm	
RADIAL-FORCE	径向压力	Fr=28 N Max	
SHAFT RADIAL PLAY	径向间隙	0.02mm Max.@4N	
SHAFT AXIAL PLAY	轴向间隙	0.14mm Max.@4N	

CCW COMMUTATION  
VIEWED FROM OUTPUT SHAFT



A			DESIGN	DATE	P/N.	***
REV	ECN NO.	DESCRIPTION	HX	241014	TITLE	Specifications
UNLESS OTHERWISE SPECIFIED TOLERANCES: DECIMALS: .X ±0.5 .XX ±0.25 .XXX ±0.1 UNIT: mm DO NOT SCALE DRAWING		MATERIAL	WEIGHT	CHECK	USED ON	iBLD42NR-100-H-T
			SHEET	STANDARDIZATION	DWG NO.	REV A
		FIRST ANGLE PROJECTION	SCALE	APPD	FULLING MOTOR	
			1:1			